

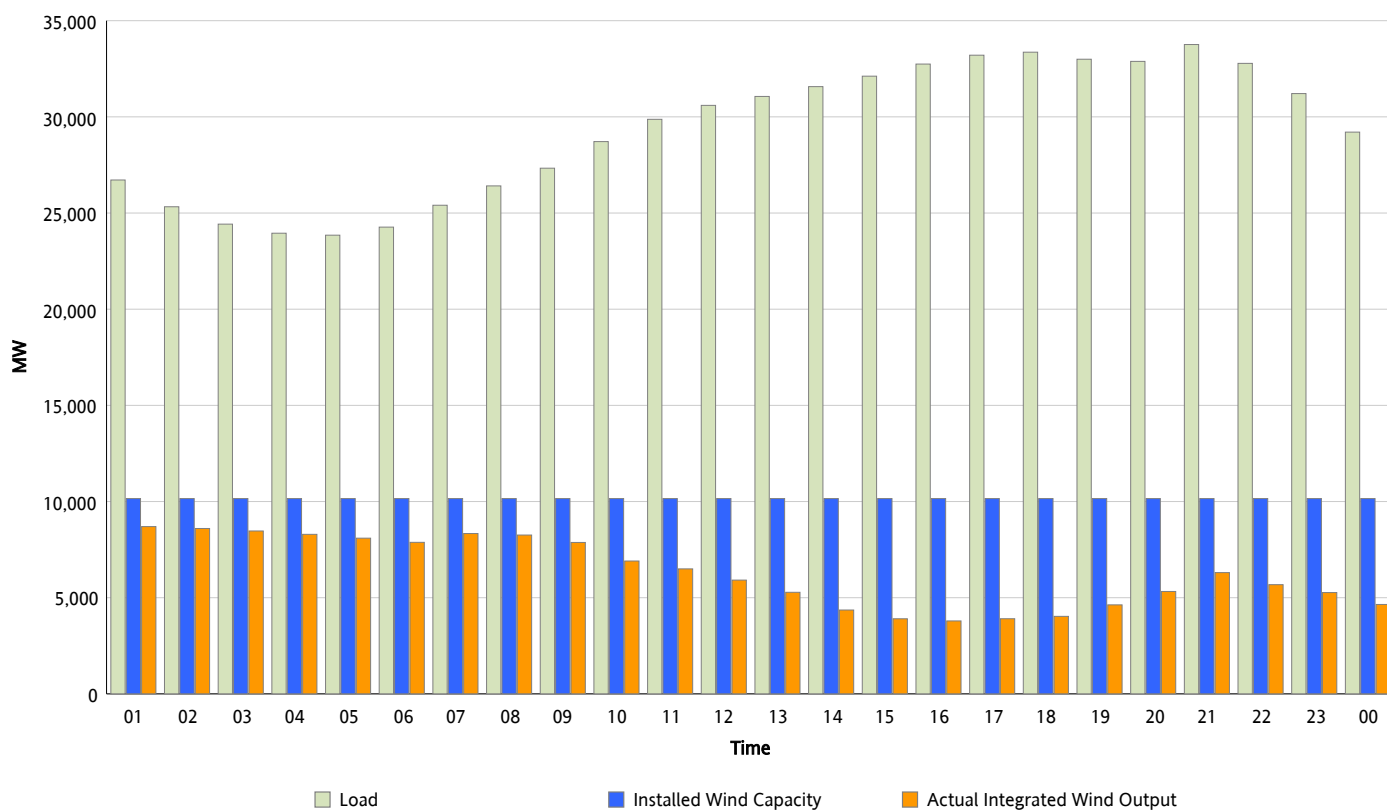


ERCOT Grid Operations

Wind Integration Report : 03/16/2013

Peak Load	33,761 MW
Load Peak Hour (HE)	21
Wind Over Peak	6,305 MW
Wind Record 02/09/13	9,481 MW
Max Wind Value*	8,807 MW
Wind Peak Time	00:20
Wind Integration %	32.59 %

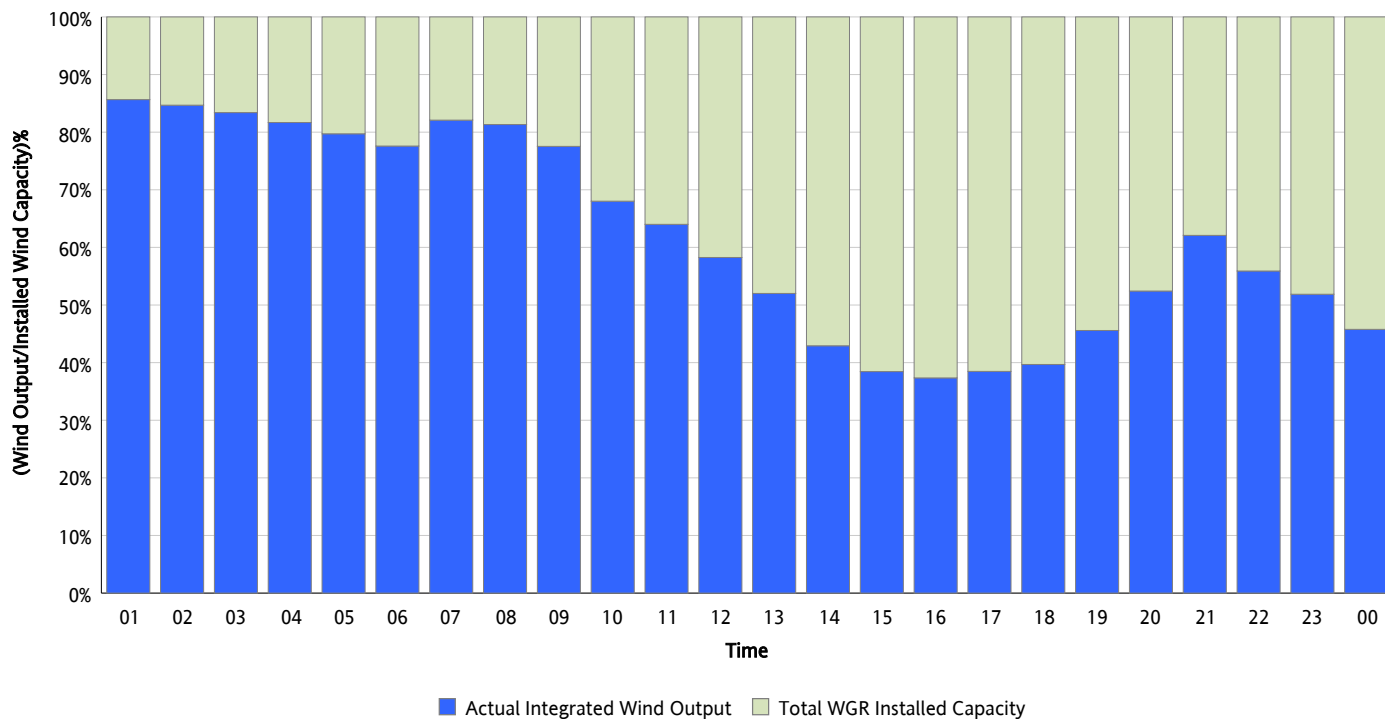
Hourly Average Actual Load vs. Actual Wind Output
03/16/2013



** Wind Record and Wind Max represent instantaneous values and the rest of the values are integrated over the hour*

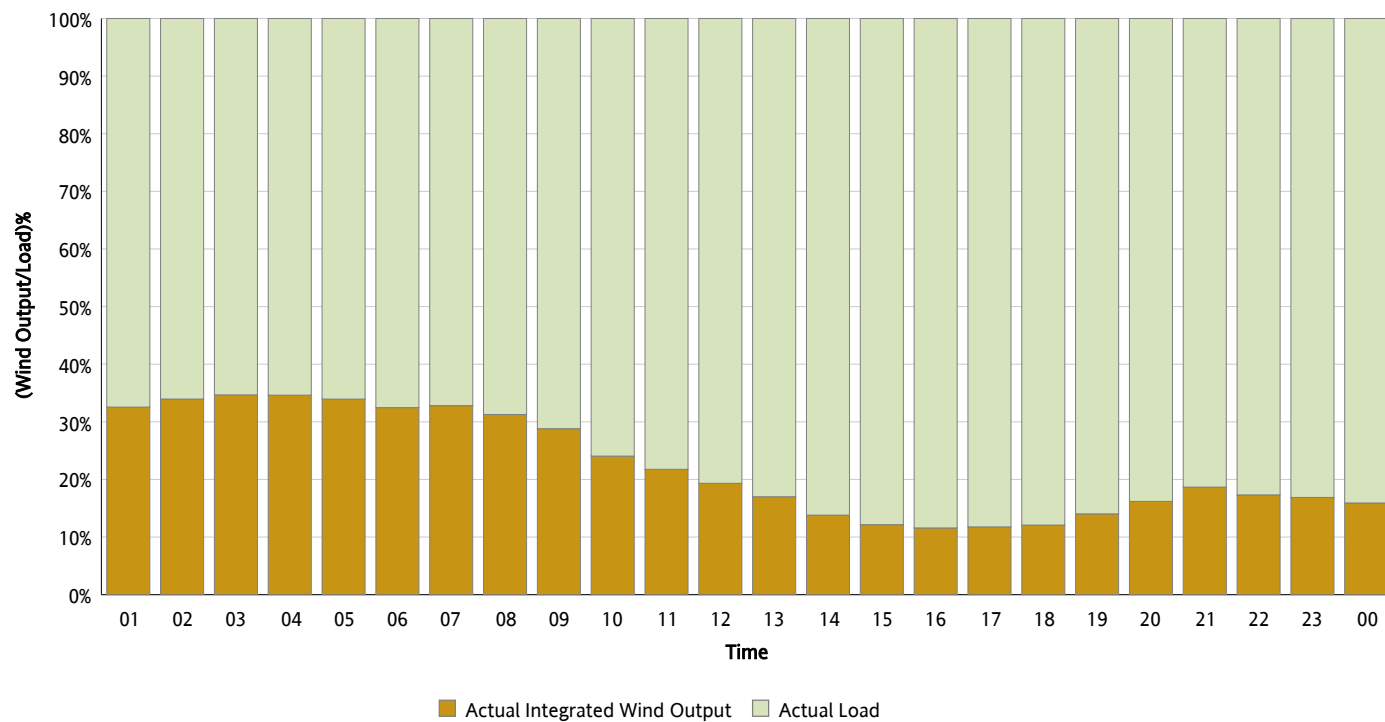
Actual Wind Output as a Percentage of the Total Installed Wind Capacity

03/16/2013



Actual Wind Output as a Percentage of the ERCOT Load

03/16/2013



ERCOT Load vs. Actual Wind Output

03/09/2013 - 03/16/2013

